

Thermo Probe

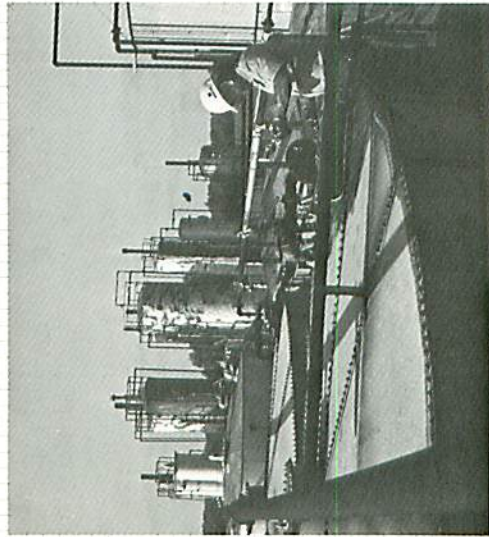
TP-2

Thermo-Probe TP-2, with an improved circuit board for rugged field use, was developed through a comprehensive two year program of testing by the photochemical industry.



Sales:
ERGON, Inc.
Post Office Drawer 1639
Jackson, Mississippi
39215-1639
(601) 948-3472
FAX (601) 948-3472 ext. 263

Service or Repair
ERGON, Inc.
Thermo Probe Division
613 Court St.
Jackson, MS
39201
(601) 939-1831



Applications

- Tank Farms
- Refineries
- Chemical Plants
- Food Processing Plants
- Marine Transportation (Barges and Tankers)
- Meter Proving

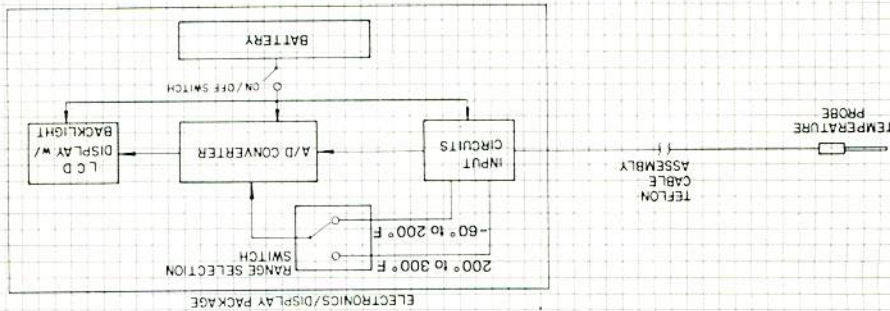
Drop probe into tank to desired depth. Set HI-LO switch to Low range (-60° to 199.9° F.) or High range (200° to 300° F.) Push spring-return DAY-NIGHT switch to appropriate position and read temperature. Meter reads directly in Low range but 200° F. must be added to High range reading. Note that power consumption is much greater in NIGHT position.

A ground connection strap is included so that the meter may be grounded to the tank structure.

If LCD display is exposed to high temperatures such as might be encountered on the dash of an automobile during the summer months, the display may turn dark and be rendered incapable of forming a digital display. It will return to normal when returned to a lower ambient temperature.

"LO BAT" on display indicates the battery should be replaced by removing the back cover. Recalibration instructions are located on inside of cover.

Thermo Probe Block Diagram



Thermo Probe*

TP-2

Handy cable holder and probe clip

Spring-return ON-OFF switch
(Moisture resistant)

LCD Display with backlight

TEFLON® coated probe cable
(graphite pigment minimizes static charge)

Carrying strap

Temperature Range Selector
(Moisture resistant)

Hi range 200° to 300° F.
Lo range -60° to 200° F.
C.° range -55° to 150° C.

High impact moisture resistant
ABS case

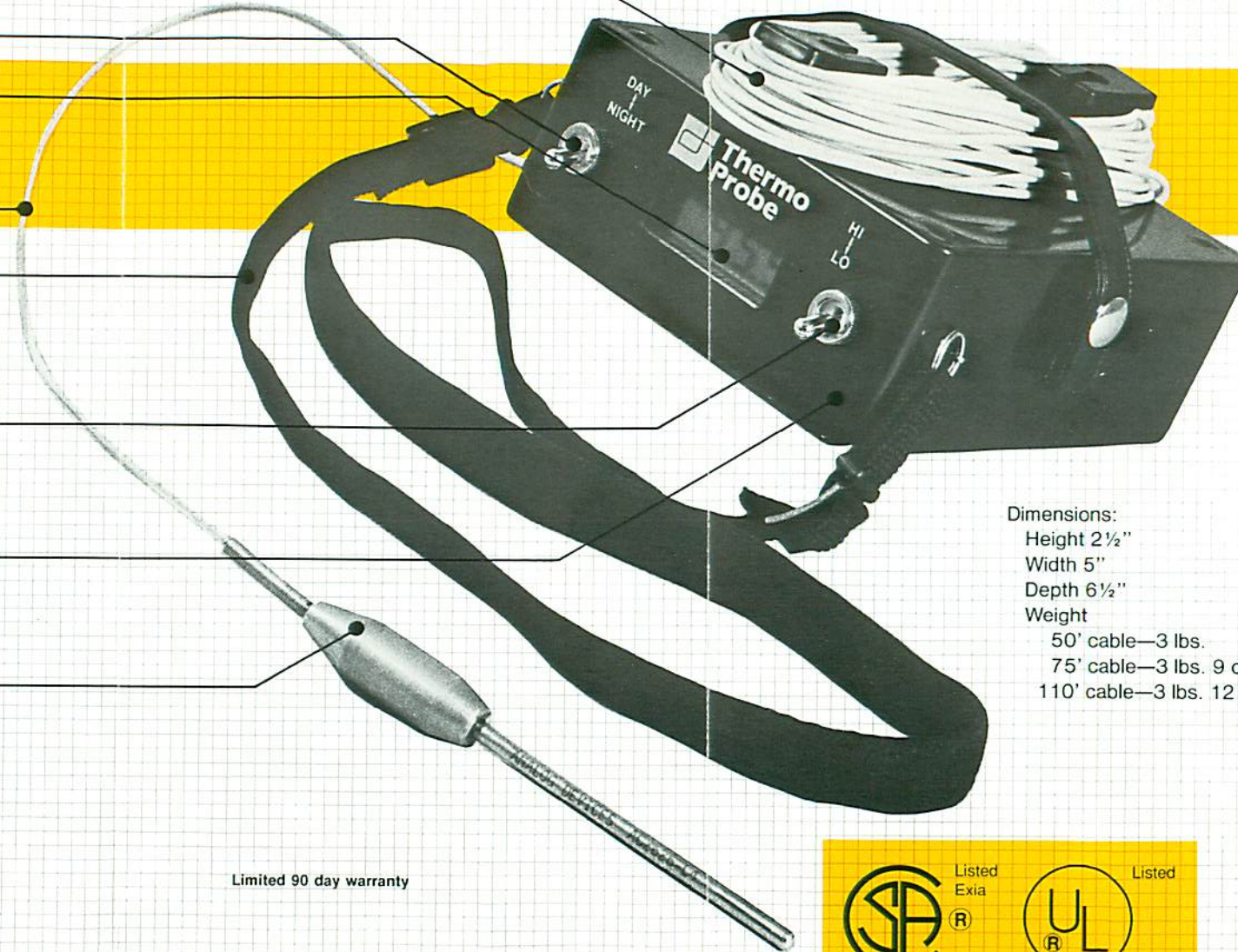
Rigidly mounted solid-state
integrated circuit probe with cable
strain relief

Low battery indication on display



Limited 90 day warranty

Resolution 0.1° of scale
Accuracy ± 0.3° F. in 32° to 200° F. Range
± 0.6° F. in 200° to 300° F. Range
± 0.2° C. in 0° C. to 100° C. Range



Dimensions:

Height 2 1/2"

Width 5"

Depth 6 1/2"

Weight

50' cable—3 lbs.

75' cable—3 lbs. 9 oz.

110' cable—3 lbs. 12 oz.



Listed
Exia



Listed

29GO

Thermo Probe TP-2

Intrinsically safe Thermo Probe for
use in hazardous locations. Class
I, Group C & D. Temp. Code T3C

Conforms to American Petroleum
Institute (API). Chapter 7, Section 3.

For further information,
contact your ERGON Thermo Probe
sales representative
(601) 948-3472
FAX (601) 948-3472 ext. 263
or complete and return this form:

Name

Company

Mailing Address

City

State

Zip

Phone

Mail to:

ERGON, Inc.
Thermo Probe Division
P.O. Drawer 1639
Jackson, MS 39215-1639

