



## TL2-A Instructions for Use

The TL2-A is an affordable high precision digital thermometer. It has been designed for use in both laboratory and industrial applications. Additional video tutorials and information are included on the software USB flash drive. Features of the TL2-A are as follows:

Configurable RTD and SPRT combinations (100 $\Omega$  or 200 $\Omega$ )

- Available 2 channel temperature measurement
- 0.001 degree resolution (0.0001 for  $\Omega$ )
- Implements ITS-90 or Callendar-Van Dusen calibration coefficients
- Displays temperature in Celsius, Fahrenheit, Kelvin or Ohms
- Backlit, Large LCD character display
- USB Type 'A' PC interface
- USB Type 'B' flash memory interface
- User programmable relay output interface (Temperature triggered)
- Detachable AC power cord
- IP50 enclosure rating
- Adjustable Zero Offset correction

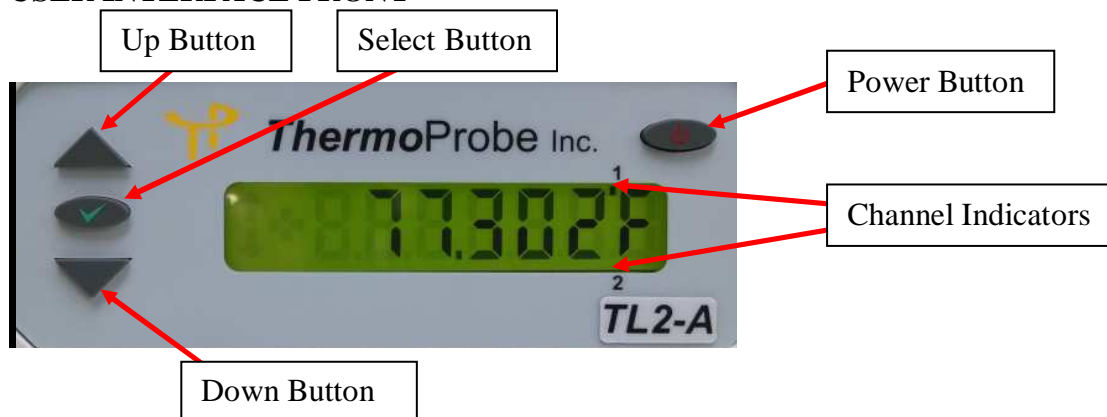
### Cautions

The TL2-A and associated temperature probes are sensitive devices and should be handled with care. Care should be taken not to submit the temperature probes to mechanical shock, over-heating or exposure to fluids at the probe to cable interface. Overheating the probes beyond their calibrated temperature range, damage and/or contamination may cause sensor drift and instability.

### Authorized Service

Service and Calibration should only be performed by ThermoProbe, Inc. or an authorized distributor. Contact ThermoProbe for questions about setting up this software or using the TL2-A.

### USER INTERFACE FRONT



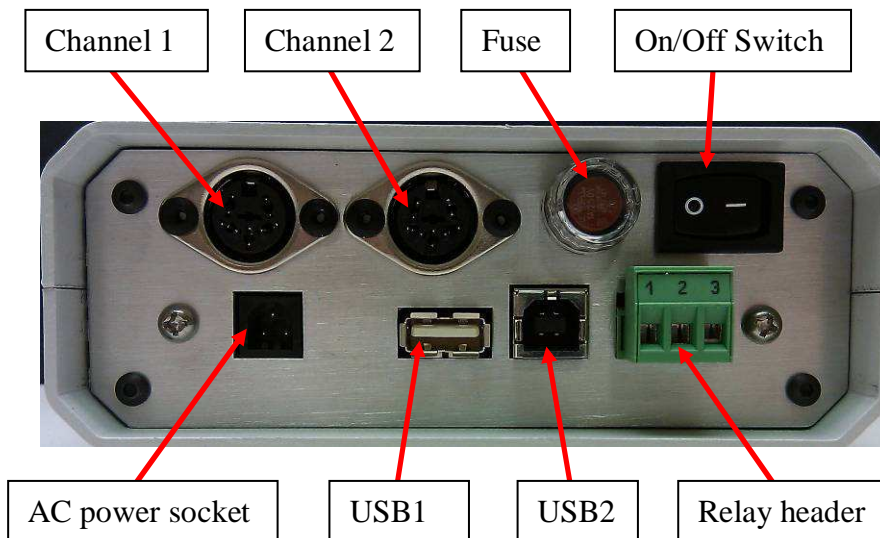
**Power Button (AC Unit)** – Use the power button to save your settings (temperature units, display decimals, zero adjustments, relay settings, etc.), and to place the TL2-A in ‘Standby’ mode. If you remove AC the power without putting the TL2-A in Standby mode, the user settings will revert to the previous settings.

**Select Button** - Activates the user settings menu and selects menu items.

**Up and Down Buttons** - Selects the display for channel 1 and channel 2, navigates the menu (display next/previous menu item). Also, adjusts the zero correction when in the Zero Adjust Mode.

**Channel Indication** – Marker indicates which channel is currently being displayed. (For active display and menu functions)

## USER INTERFACE REAR



**Channel 1 & 2** – Female sockets for probe connections.

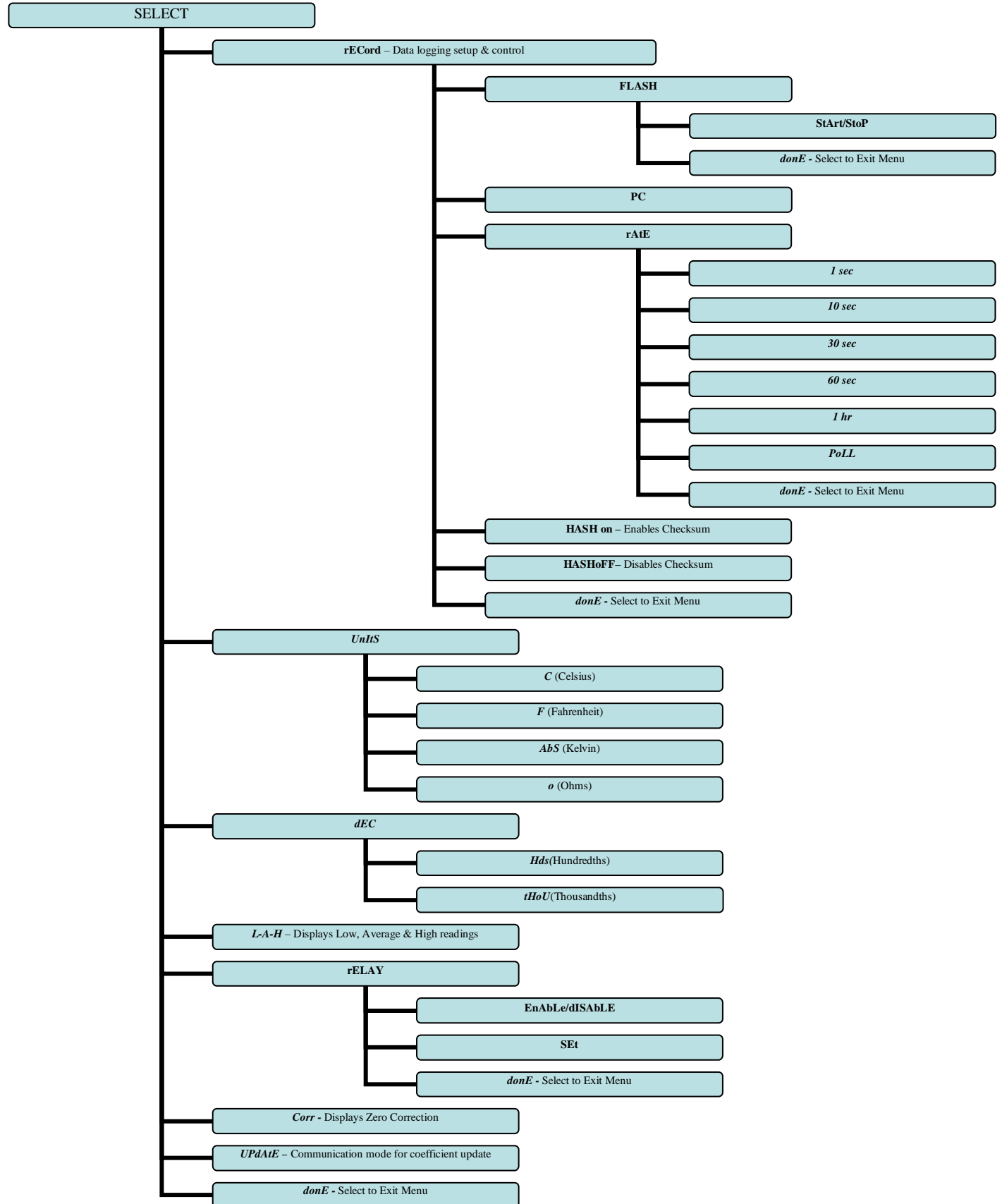
**USB1** - type ‘A’ socket for connecting flash USB devices

**USB2** – type ‘B’ socket for PC interface cable

**Relay Header** – User configurable normally open or normally closed relay control

**Power Switch** – Used to turn units On and Off

# Interface Menu: (AC Powered Unit)



## NOTES:

- All displayed values and changes are for the *current selected channel only*.
- To save settings, the Power Button must be pressed. This will set the unit to 'Standby'.
- The low, average and high readings are cumulative from the time the TL2-A is powered on. They are not saved when the TL2-A is shut down or put in standby and will re-start when the unit is turned on. The low, average, and high readings will be displayed once the TL2-A's readings have stabilized (about 22 seconds.)

## USB Flash Drive Logging *(AC powered unit only):*

1. Insert a flash drive into the USB1 type 'A' socket on the back of the TL2-A.
2. From the record menu, select 'FLASH' and 'StArt'.
3. The TL2-A display will flash 'ACCESS' until the flash drive recording has started. (A 'no DSC' message will appear if the flash drive is not detected).
4. The up/down arrow indicator will blink on the LCD display to indicate that logging is in process.
5. To stop the data logging, select 'FL StoP' from the menu. Wait for the 'FL DonE' message to display before removing the flash drive from the TL2-A. (If the drive is removed before the logging has been stopped, the data will be lost.)

## Once the flash drive data logging has been completed, the data can be opened on a standard PC.

**Note:** Each time the TL2-A records to the flash drive it will create a new file numbered sequentially higher than the previous file. (ex: 0001.csv, 0002.csv, etc.)

1. Remove the flash drive from the TL2-A.
2. Insert the flash drive into a USB port on the PC.
3. Browse to the folder containing the flash drive contents.
4. The TL2-A data will be contained in a .csv file that can be opened with either Microsoft Excel or a text editor such as Notepad.
5. The column format is as follows: Date, Time, Channel 1 reading, Channel 1 units, Channel 2 reading and Channel 2 units.

	A	B	C	D	E	F	G	H	I	J	K	L	M
1	11/12/2011	10:51:14	20.9127	C	20.9282	C							
2	11/12/2011	10:51:15	20.9127	C	20.9282	C							
3	11/12/2011	10:51:16	20.9132	C	20.9282	C							
4	11/12/2011	10:51:17	20.9132	C	20.9282	C							
5	11/12/2011	10:51:18	20.9132	C	20.9282	C							
6	11/12/2011	10:51:19	20.9132	C	20.9282	C							
7	11/12/2011	10:51:20	20.9132	C	20.9279	C							
8	11/12/2011	10:51:21	20.9132	C	20.9282	C							
9	11/12/2011	10:51:22	20.9127	C	20.9282	C							
10	11/12/2011	10:51:23	20.9132	C	20.9282	C							
11	11/12/2011	10:51:24	20.9132	C	20.9282	C							
12	11/12/2011	10:51:25	20.913	C	20.9279	C							
13	11/12/2011	10:51:26	20.9132	C	20.9279	C							
14	11/12/2011	10:51:27	20.9132	C	20.9282	C							
15	11/12/2011	10:51:28	20.9132	C	20.9282	C							
16	11/12/2011	10:51:29	20.9132	C	20.9282	C							
17	11/12/2011	10:51:30	20.913	C	20.9279	C							
18	11/12/2011	10:51:31	20.9132	C	20.9277	C							
19	11/12/2011	10:51:32	20.9132	C	20.9277	C							
20	11/12/2011	10:51:33	20.913	C	20.9274	C							
21	11/12/2011	10:51:34	20.9127	C	20.9272	C							
22	11/12/2011	10:51:35	20.9127	C	20.9269	C							
23	11/12/2011	10:51:36	20.9127	C	20.9272	C							
24	11/12/2011	10:51:37	20.9127	C	20.9274	C							
25	11/12/2011	10:51:38	20.9127	C	20.9277	C							
26	11/12/2011	10:51:39	20.9127	C	20.9274	C							

## **Polling Mode** *(AC powered unit only):*

You can set the TL2-A to send data on command. This is useful for people who write data collection software that will request data only when it is needed. To place the TL2-A in polling mode, select “PoLL” as the sample rate to be used under the recording section of the TL2-A menu. (See Interface Menu Diagram) When the PC sends a question mark character (?) to the TL2-A, the TL2-A will respond with the temperature. When the TL2-A is set to flash record mode, the polling feature will not work.

## **Temperature controlled Relay** *(AC powered unit only):*

The TL2-A comes equipped with a switchable relay. This relay will toggle whenever the temperature crosses the set point threshold set through the user menu. The provided screw-terminal header can be wired in two configurations:

- Terminals 1-2 are normally closed (NC) and will turn OFF (open) when the relay is set.
- Terminals 1-3 are normally open (NO) and will turn ON (close) when the relay is set.



Figure 1: Relay screw-terminal header

The relay function can be implemented from the user menu. For the relay function to be active, the user must select ‘EnAbLE’ from the relay menu. Also from the relay menu, the temperature set point can be configured. (‘rELAY’ -> ‘SEt’) Use the Up & Down buttons to select the desired setpoint. Use the select button to select each digit to modify. Ensure this setpoint is correct before selecting the ‘EnAbLE’ function. The relay set point will remain the same regardless of the unit selection (C, F or K).

Once the relay has been toggled, it will remain in that state until the user disables it using the Select button. If desired, the user will then need to re-enable the relay from the user menu.

## Zero Correction

Over time, a sensor may experience a shift in temperature at different ranges of the instrument. Zero correction allows the user to make an adjustment to the current channel temperature display that effectively corrects for this shift. This offset or 'zero correction' is applied to the entire effective range of the instrument. Each channel has its own zero correction.

**NOTE:** A zero correction made at a particular point may not correct the temperature at another point. It is recommended that the instrument be fully calibrated annually to maintain acceptable temperature tolerances for the range of the instrument.

To view the zero correction for the current channel, select the "Corr" option from the menu.

To set a zero correction:

1. Use the function and arrow buttons to navigate to the "Corr" item in the menu. Press and hold the power button. While holding the power button, press the function button until the "Adj" menu item appears. Release both buttons.
2. Press and release the function button again. The double arrows will flash indicating that you are in zero correction mode. Use the up and down arrows to adjust the display temperature as desired. The adjustment will only apply to the channel on the display.
3. When you've adjusted the display, press and release the function button. Use the arrow buttons and the function button to save or cancel the zero correction and exit zero correction mode.
4. To view the zero correction, use the function button and arrow buttons to navigate to the Corr menu item as before. This time, press and release the function button. The display will show the zero correction for the selected channel and then return to temperature display mode.
5. To save the zero correction, the Power Button must be pressed. This will set the unit to 'Standby'.

## PC Software setup:

There is a PC driver file that is needed to connect the TL2-A to your PC. We have included a disc with the driver software for Windows XP, Windows Server 2003, Windows Vista, Windows Server 2008, Windows 7, Windows Server 2008 R2. Other operating systems are supported and driver software is available.

Use the Windows Add Hardware Wizard and the driver files to set up a USB Com port to connect to the TL2-A. Connect using HyperTerminal or other software that can connect interface with the selected Com port.

\*\* The USB driver software web site is (<http://www.ftdichip.com/Drivers/VCP.htm>)

**.Note** These instructions are taken from a document that is available online from Future Technology Devices International. ([http://www.ftdichip.com/Support/Documents/AppNotes/AN\\_104\\_FTDI\\_Drivers\\_Installation\\_Guide\\_for\\_WindowsXP%28FT\\_000093%29.pdf](http://www.ftdichip.com/Support/Documents/AppNotes/AN_104_FTDI_Drivers_Installation_Guide_for_WindowsXP%28FT_000093%29.pdf)). Detailed technical information is available from that website. Technical assistance with installing the driver software is available from ThermoProbe, Inc. Check <http://thermoprobe.net/docs/index.html> for the latest version of this document.

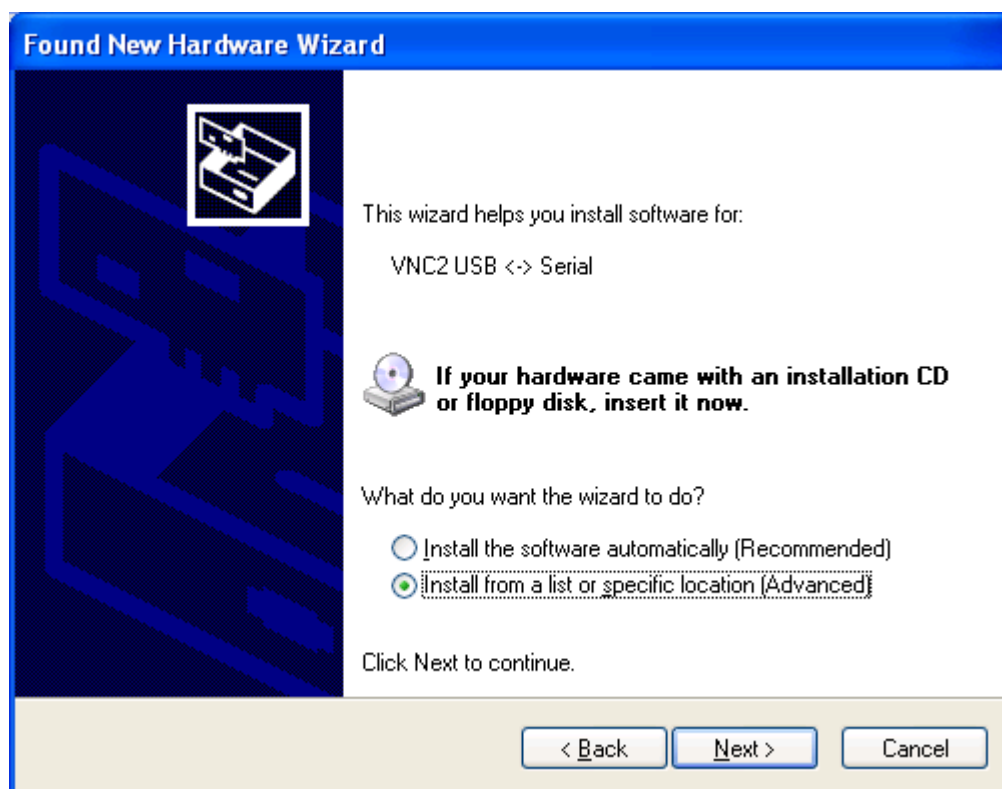
**Instructions to install the TL2-A PC driver (Windows XP shown)** The driver for the TL2-A PC (Future Technology Devices International driver) installs a Virtual Com Port (VCP) on your PC. The steps to install this driver are:

1. Place the USB flash drive provided with your TL2-A in the USB port of the PC.
2. Connect the TL2-A to the PC with the provided USB cable.
3. Make sure the TL2-A is plugged into the wall with the AC power cord.
4. Make sure the TL2-A is powered on.
5. A Found New Hardware Wizard window should appear.

6. Select "No, not this time".
7. Click "Next >".



8. On the next screen click "Install from a list or specific location (Advanced)" and click "Next >".



9. On the next screen select "Search for the best driver in these locations.", Check the "Search removable media (floppy, CD-ROM...):", and then click "Next".





10. The wizard will complete the installation of the software.

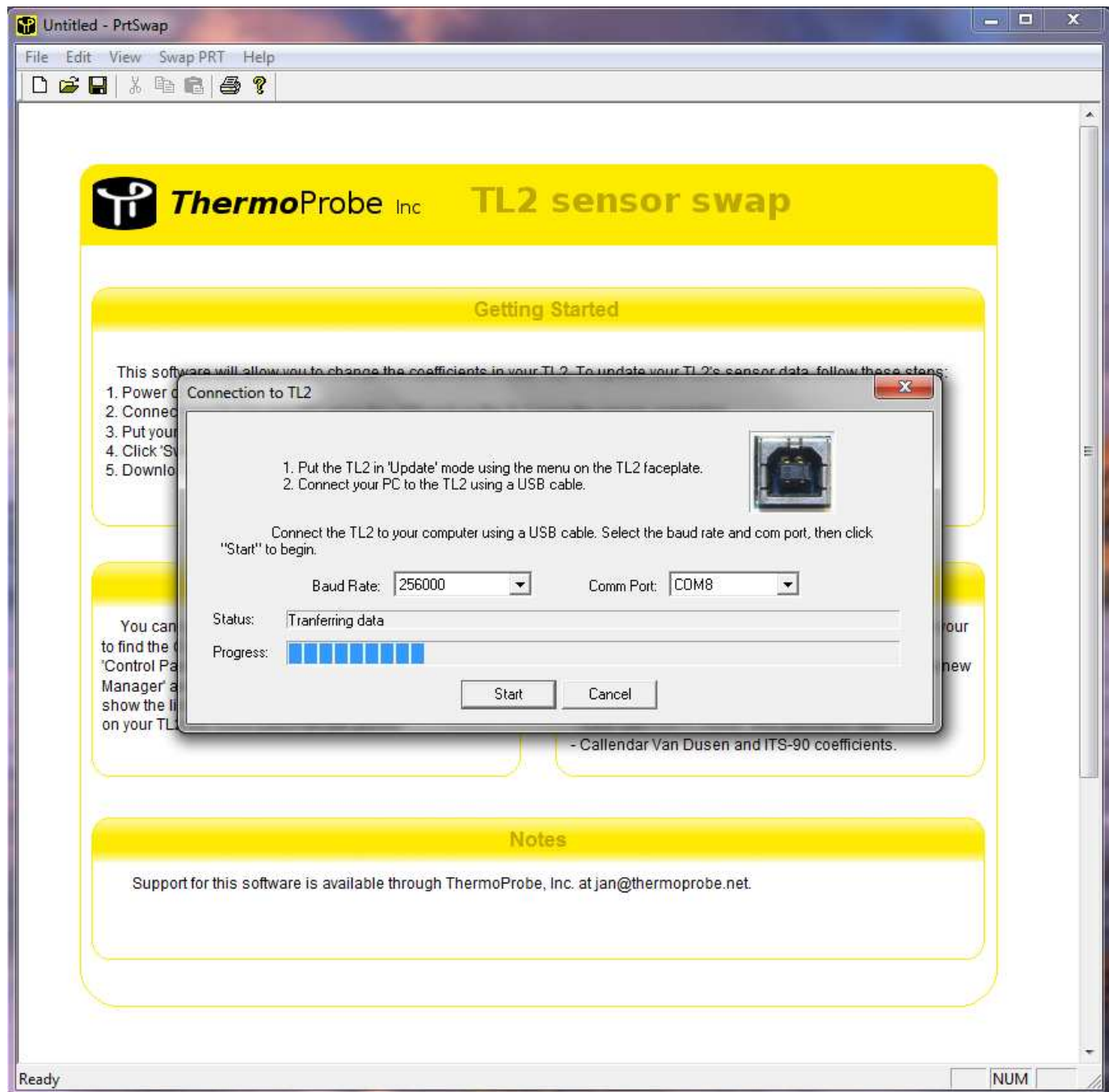


**NOTE:** If your PC should start a new "Found New Hardware Wizard" it may be necessary to repeat the above steps to complete the driver installation.



## Sensor Data Coefficient Entry:

The Sensor Data software included with the TL2-A USB flash drive allows the user to input sensor coefficients. Install the software by browsing to the SensorData folder on the drive and run the setup.exe file.



1. Connect the TL2-A to the PC with a USB cable and power it on.

NOTE: See 'PC Software setup' section to install the COM port drivers.

2. Make sure the TL2-A has been set to 'Update' mode from the user menu. Press the 'Select' button and then up or down until you see 'UPdAtE'. Press the select button again to allow PC connection. The display will flash when connecting.



3. From the main software screen select swap PRT.

4. Select the appropriate COM port and set baud rate to 256000.

NOTE: See 'Finding Com Port Section' if you don't know which com port to select.

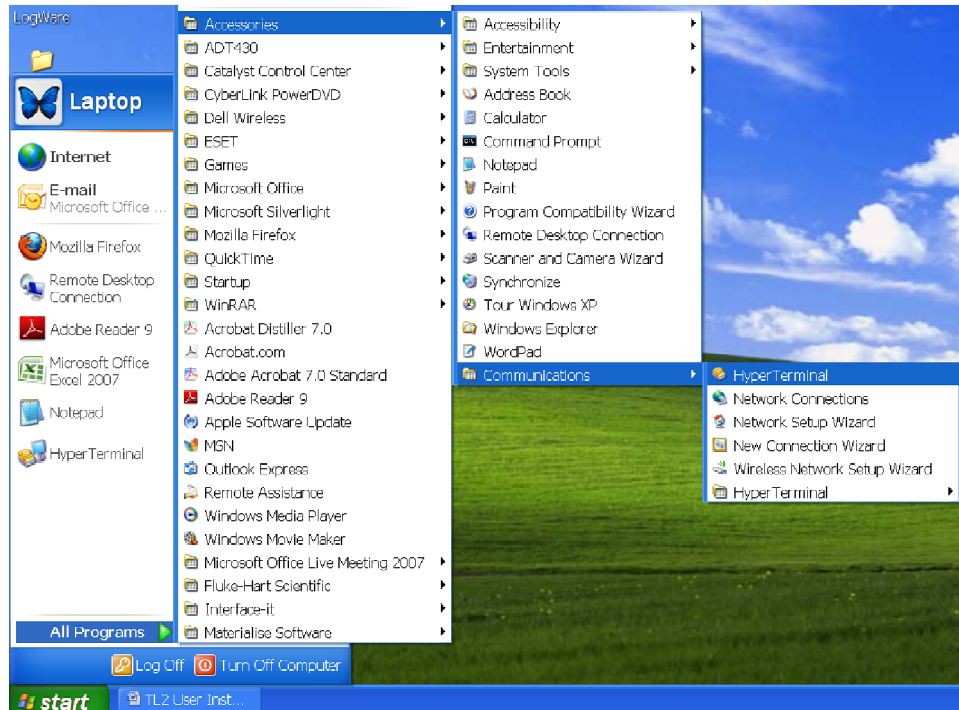
5. Select start from the Connection screen. A window will open a message stating "TL2-A data successfully transferred". Select 'OK' to clear this window. Once completed the Calibration Data screen will appear.
6. Enter the unit serial number, the probe serial number and calibration date.
7. Enter the curve data using the coefficient information provided with the PRT connected to each channel.
8. After all the data has been entered for both channels select OK to upload the data to the TL2-A. The Connection screen will display again. Select start to load the sensor data. A window will open a message stating "TL2-A data successfully transferred". Select 'OK' to clear this window. The TL2-A will exit Update mode and resume temperature display.

## Using Hyperterminal:

You can use Hyperterminal to receive temperature data from the TL2-A.

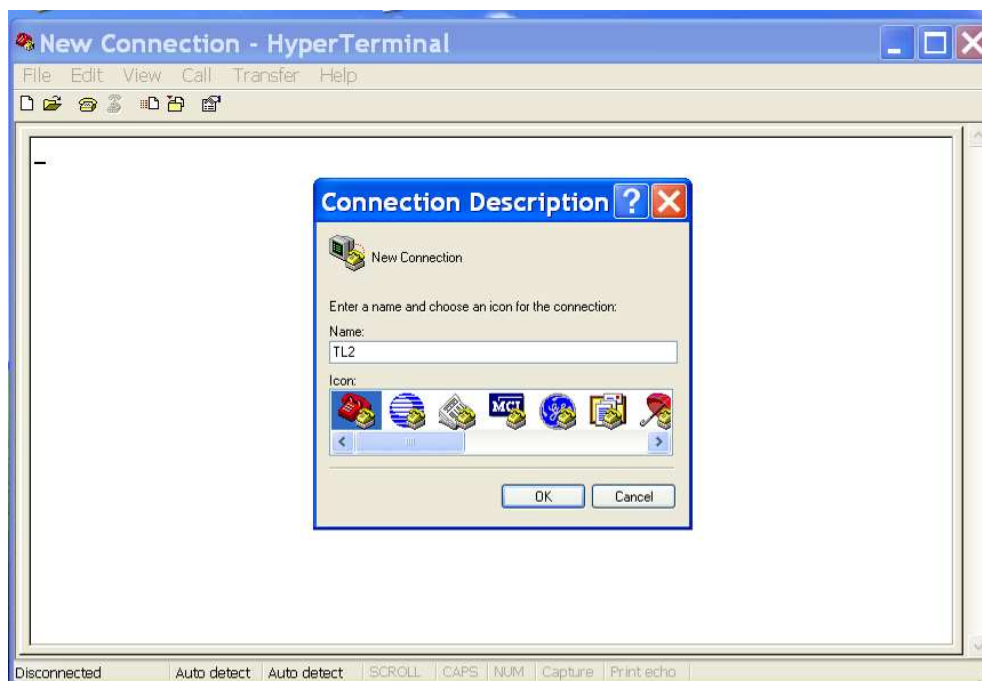
Note: Hyperterminal is no longer included with Windows 7 systems. A copy of Hyperterminal is included with the TL2-A software USB flash drive and can be run from that location.

Click "start" -> "Accessories" -> "Communications" -> "HyperTerminal"



Click "File"->"New Connection"

Give the connection a name and click "OK"

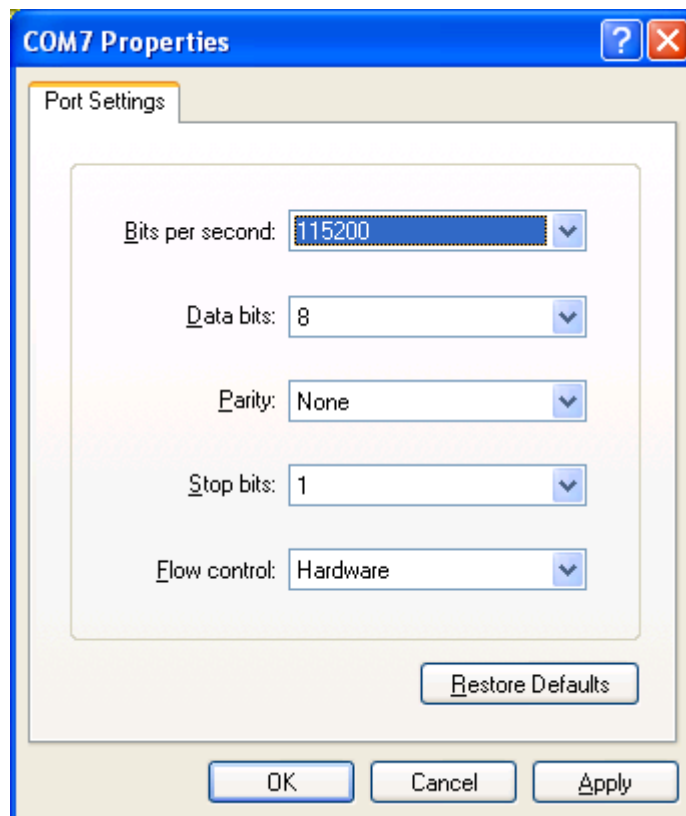


Select the Com Port for the TL2-A and click "OK"

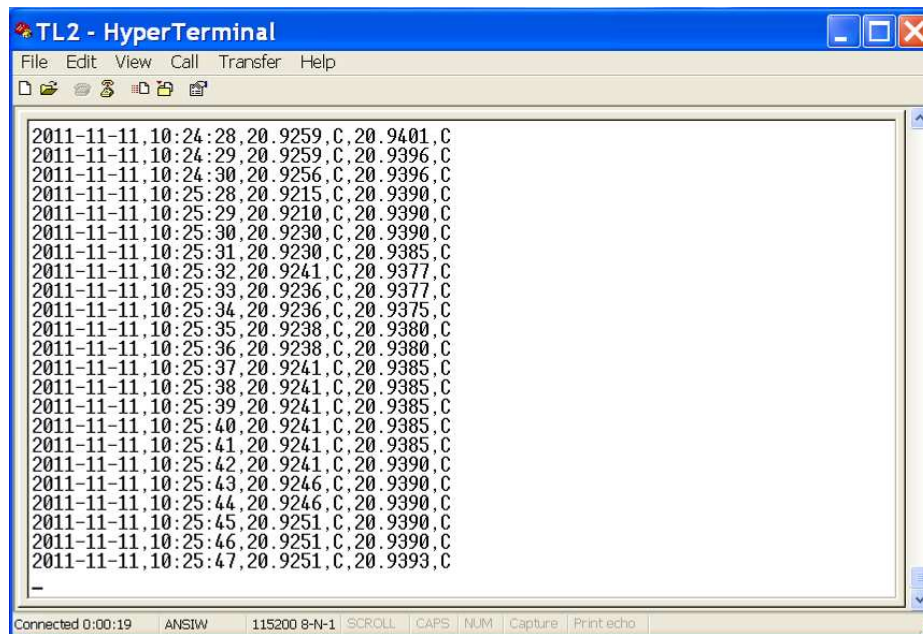
NOTE: See 'Finding Com Port Section' if you don't know which com port to select.



Set the Port Settings as shown and click "OK".



The Hyperterminal display should be as follows:



The TL2-A will output the temperature for both channels. There are 3 columns in the interface display. The first column is a date and timestamp. The second column is the first channel output and the third column is the second channel output. The displayed units are the units selected from the faceplate (F, C, K or Ohms). The displayed precision is four decimals.

## **TL2-A HyperTerminal Command Set:**

Function	Command	Description
Toggle Prompt (on)	<cr>	Stop sending temperatures, show a ">", and wait for a command.
Toggle Prompt (off)	<cr>	Resume sending temperatures.
Set Date	D YY-MM-DD<cr>	Set the TL2-A's real time clock's date.
Set Time	T HH:MM:SS<cr>	Set the TL2-A's real time clock's time.
Set Rate	R [0,1,10,30,60,3600,poll]<cr>	Set the rate the TL2-A sends temperatures (in seconds).
Poll Temperature	?<cr>	Send a temperature now.
Toggle Checksum (on)	C<cr>	Add a checksum hash to the temperature.
Toggle Checksum (off)	C<cr>	Don't send a checksum hash with the temperature.
Send Version	V<cr>	Show the firmware version for the TL2-A (there are 2 boards and each has a firmware version).

Note 1: The carriage return, <cr>, is hex digit 0x0D. The line feed (new line), <lf>, is hex digit 0x0A.

Note 2: All input commands are echoed back to the sender.

### **Toggle Prompt**

**Command:** <cr>

**Response** (toggle on): <cr><lf>>

**Response** (toggle off): <cr><lf>

**Remarks:** No temperatures are sent while prompt mode is on. Temperature sending will resume once the prompt is toggled off. If other functions are used while the prompt is on, the responses are preceded by a prompt <cr><lf>>.

### **Set Date**

**Command:** D YY-MM-DD<cr>

**Response** (success): New Date is: YYYY-MM-DD<cr><lf>

**Response** (failure): Error - use format "> D(ate) (YY)YY-MM-DD"<cr><lf>

**Remarks:** A lower case "d" or the word "Date" can be used.

### **Set Time**

**Command:** T HH:MM:SS<cr>

**Response** (success): New Time is: HH:MM:SS<cr><lf>

**Response** (failure): Error - use format "> T(ime) HH:MM:SS"<cr><lf>

**Remarks:** A lower case "t" or the word "Time" can be used.

### **Set Rate**

**Command:** R [0,1,30,60,3600,poll]<cr> (e.g. R 1<cr>, R 30<cr>, r poll<cr>

**Response** (success): Send Rate: X sec.<cr><lf>

Send Rate: Poll (enter ? For a temp.)<cr><lf>

**Response** (failure): Rate Format">R X" (X =1,10,30,60,3600,Poll)<cr><lf>.

**Remarks:** The brackets contain the options, separated by commas. (e.g. R 10<cr>, R poll<cr>). A lower case r or the word Rate (or rate) can be used. Entering 0 is the same as entering poll.

### **Poll Temperature**

**Command:** ?<cr>

**Response** (success):

**Response** (failure): The TL2-A sends the temperature now, regardless of the temperature send rate. (When in polling mode, the TL2-A only sends temperatures when it is polled.) Polling for a temperature resets the timer for the 10-3600 second rate (the next temperature will be sent <rate> seconds from the polled temperature.

**Remarks:** Polling can be used when not in polling mode to synchronize the send rate. It can be used in polling mode to get the temperature exactly when it is needed.

### **Version**

**Command:** V<cr>

**Response** (success): A lower case v can be used. Sends the TL2-A firmware version for the main and accessory boards.

**Response** (failure): none

**Remarks:** The version information is useful when verifying that the correct firmware has been loaded on the TL2-A.



## Setting the Time and Date:

**NOTE:** It may be necessary to set the TL2-A clock using Hyperterminal as follows:

1. After a connection has been established with the TL2-A per the previous steps, hit 'Enter' to create a line break in the data feed.
2. To change the date enter the text as follows: **Date (YY)YY-MM-DD**

```
Com 7 - HyperTerminal
File Edit View Call Transfer Help
2000-01-01,00:00:07,71.7757,F,72.2512,F
2000-01-01,00:00:08,71.7725,F,72.2436,F
2000-01-01,00:00:09,71.7698,F,72.2305,F
2000-01-01,00:00:22,71.7536,F,72.1249,F
2000-01-01,00:00:23,71.7518,F,72.1168,F
>Date 2012-03-26
New date is: 2012-03-26
>Time 10:58:55
New time is: 10:58:55
>
2012-03-26,10:58:57,71.5909,F,71.5208,F
2012-03-26,10:58:58,71.5909,F,71.5208,F
2012-03-26,10:58:59,71.5877,F,71.5122,F
2012-03-26,10:59:00,71.5855,F,71.5086,F
2012-03-26,10:59:01,71.5855,F,71.5086,F
2012-03-26,10:59:02,71.5819,F,71.5005,F
2012-03-26,10:59:03,71.5796,F,71.4964,F
2012-03-26,10:59:04,71.5796,F,71.4964,F
2012-03-26,10:59:05,71.5760,F,71.4887,F
1. Press "Enter" to get a ">" prompt;
2. Enter the date as "Date YYYY-MM-DD" and press "Enter".
3. Enter the time as "Time HH:MM:SS" and press "Enter".
4. Press "Enter" at the ">" prompt to exit command mode.
Connected 0:01:24 ANSIW 115200 8-N-1 SCROLL CAPS NUM Capture Print echo
```

3. To change the time enter the text as follows: **Time HH:MM:SS**

## Saving a file from HyperTerminal:

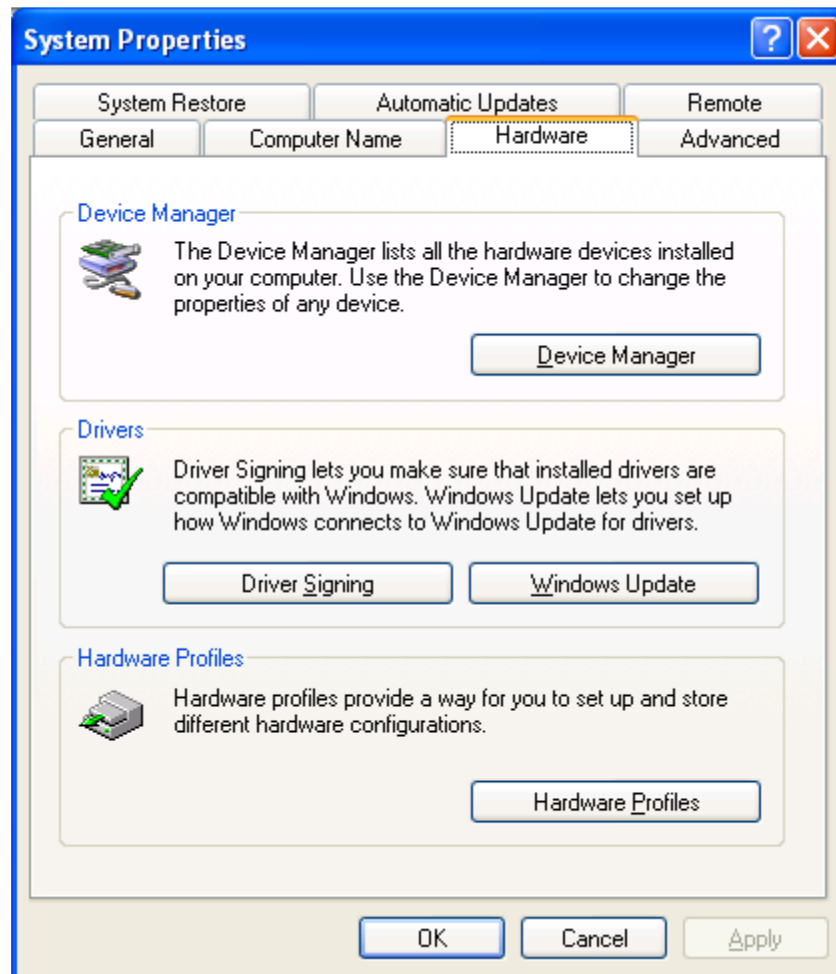
1. From the HyperTerminal menu bar click "Transfer->Capture Text".
2. Enter the file name (if you use ".csv" Excel will recognize the file as a comma delimited file).
3. Click "Start".
4. When you are done logging, click "Transfer->Capture Text->Stop".
5. The file is saved as plain text with the data separated by commas. You can open the file in Excel or any text editor.

```
Com 7 - HyperTerminal
File Edit View Call Transfer Help
2012-03-26,12:13:47,72.0269,F,72.0392,F
2012-03-26,12:13:48,72.0269,F,72.0392,F
2012-03-26,12:13:49,72.0269,F,72.0392,F
2012-03-26,12:13:50,72.0269,F,72.0387,F
2012-03-26,12:13:51,72.0269,F,72.0392,F
2012-03-26,12:13:52,72.0269,F,72.0392,F
2012-03-26,12:13:53,72.0269,F,72.0396,F
2012-03-26,12:13:54,72.0269,F,72.0396,F
2012-03-26,12:13:55,72.0269,F,72.0396,F
2012-03-26,12:13:56,72.0269,F,72.0396,F
2012-03-26,12:13:57,72.0269,F,72.0396,F
2012-03-26,12:13:58,72.0269,F,72.0396,F
2012-03-26,12:13:59,72.0269,F,72.0396,F
2012-03-26,12:14:00,72.0269,F,72.0396,F
2012-03-26,12:14:01,72.0274,F,72.0383,F
2012-03-26,12:14:02,72.0278,F,72.0383,F
2012-03-26,12:14:03,72.0274,F,72.0383,F
2012-03-26,12:14:04,72.0274,F,72.0392,F
2012-03-26,12:14:05,72.0278,F,72.0396,F
2012-03-26,12:14:06,72.0283,F,72.0401,F
2012-03-26,12:14:07,72.0283,F,72.0401,F
2012-03-26,12:14:08,72.0283,F,72.0401,F
2012-03-26,12:14:09,72.0283,F,72.0392,F
Capture Text
Folder: C:\Documents and Settings\Jan\Desktop
File: Log_TL2.csv
Start Cancel Browse...
Connected 1:16:27 ANSIW 115200 8-N-1 SCROLL CAPS NUM Capture Print echo
```



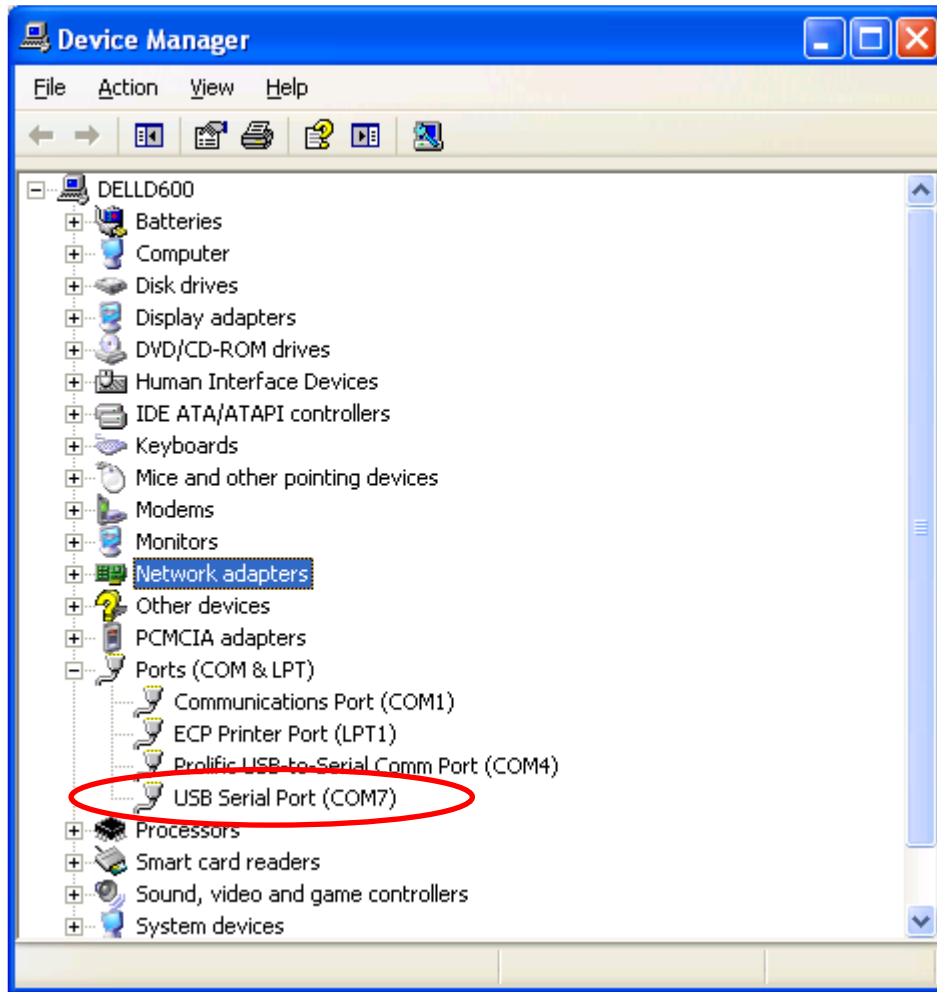
## Finding the TL2-A Com Port

You can find the Com Port that was installed by clicking on "start", choosing Settings, choosing "Control Panel" and then opening the "System" application.



Click the "Hardware" tab and then click the "Device Manager" button.

Expand the "Ports (COM & LPT)" item and look for "USB Serial Port" and note the COM number



You can use this COM port number to connect to Hyperterminal or other serial communications programs.

**ThermoProbe, Inc.**  
112A JETPORT DR.  
PEARL, MS 39208  
Tel: +1 601.939.1831  
Fax: +1 601.355.1831  
sales@thermoprobe.net  
[www.thermoprobe.net](http://www.thermoprobe.net)